



VISUAL ART VIRTUAL LEARNING

ART II: FINALIZE FRIDAY

MAY 15TH, 2020



LESSON: 05-15-2020

## OBJECTIVE/LEARNING TARGET:

Students will take time to practice the skill of drawing thumbnails of figures, finalizing their clothing designs

Take a closer look at a Famous Artist and their work

Explore a technique or Artist happening somewhere in the world right now!

Finishing touches and reflections on current assignments

Masterpiece Monday

Technique Tuesday

What's Up Wednesday

Thumbnail Thursday

Finalize Friday

Practice Skills:  
Known and new techniques

Small, loose sketches of objects we find or design concepts

# FINALIZE FIGURES

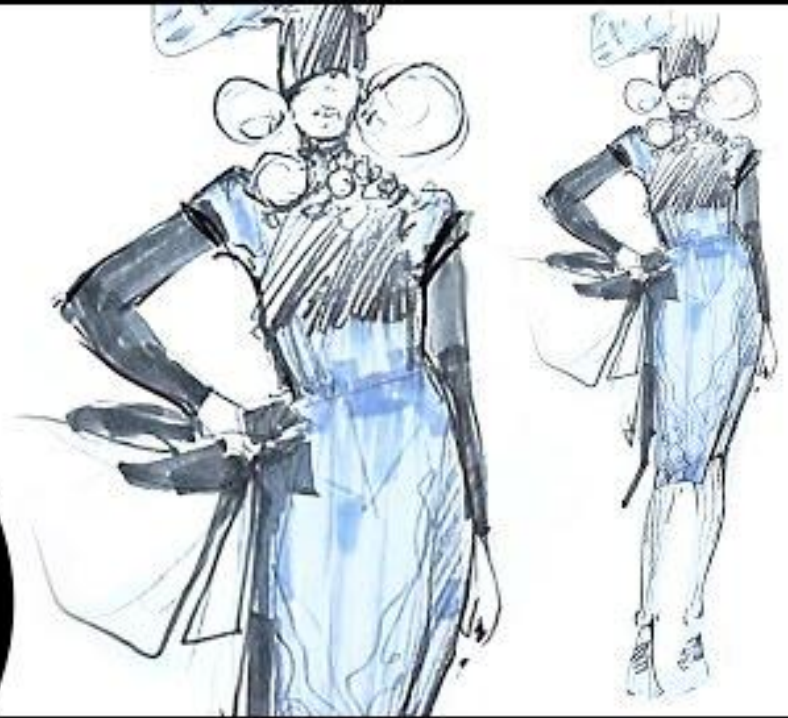
Today we will take time to personalize and finish up our Fashion Figure Thumbnails from yesterday

As you continue designing your figures, the clothes, and accessories be sure to consider:

- ❖ The season you are designing for → Spring, Summer, Fall, Winter
- ❖ The occasion → Formal, Casual, Professional ect.
- ❖ The consumer → (who would buy these clothes?) A teen, an athlete, a celebrity

HERE IS A VIDEO  
THAT MAY BE  
HELPFUL IN  
SETTING UP THE  
POSES OF YOUR  
FIGURES IN YOUR  
DRAWINGS

FASHION  
TEACHING  
BY IOANA AVRAM



<https://www.youtube.com/watch?v=dkDZNzZY04I>







- French farming jacket
- front - sack shoulders
- stand up collar
- subtle kangaroo pocket
- low water pants
- head
- curved side
- rayon shirt
- Heavy duty
- front button closure



- Fit shirt V
- Stand collar
- Full length
- 2nd button
- horizontal lines
- fitting
- at chest
- chest



- hood
- ribbed collar
- ribbed cuffs
- ribbed hem
- ribbed waistband
- ribbed waistband
- ribbed waistband
- ribbed waistband
- ribbed waistband
- ribbed waistband

1. *Handwritten notes in red ink.*

2. *Handwritten notes in black ink.*

Long Sleeve Shirt

- Mid-high Collar
- Easy folded
- Small scale collar
- Curved V edge
- Detail
- Front
- on Collar
- \* Buttons



- patch pocket
- on chest
- button through
- Relaxed legging
- 100%



- grease
- high waist
- Darts - better fitting
- Deeper waistband
- Skinny bell legs
- Better detail at knee



- hood
- ribbed collar
- ribbed cuffs
- ribbed hem
- ribbed waistband
- ribbed waistband
- ribbed waistband
- ribbed waistband
- ribbed waistband



# EVALUATE

- ❖ What **elements of design** did you use commonly in your designs and why?
  - Bright colors? Bold patterns? Etc.
  - Reminder of Elements: line, shape, color, texture, value, form, space
- ❖ What **principles of design** did you commonly use in your designs did you rely on to create interest, how and why?
  - Did you create accessories specifically to create unity in an outfit? How did you create contrast? etc.
  - Reminder of Principles: Balance, Unity, Movement, Rhythm, Contrast, Pattern, Emphasis

Personalize your responses to the specific elements and principles that you utilized

POSTERS WE USE TO  
TEACH YOU...

# ELEMENTS & PRINCIPLES OF ART

## LINE

Line is the path of a point moving through space



## PATTERN

Pattern refers to the repetition or reoccurrence of a design element, exact or varied, which establishes a visual beat.



## SHAPE / FORM



Shape implies spatial form and is usually perceived as two-dimensional. Form has depth, length, and width and resides in space. It is perceived as three-dimensional.

## RHYTHM / MOVEMENT

Rhythm or movement refers to the suggestion of motion through the use of various elements.



## COLOR

Colors all come from the three primaries and black and white. They have three properties – hue, value, and intensity.



## PROPORTION / SCALE

Proportion is the size relationship of parts to a whole and to one another. Scale refers to relating size to a constant, such as a human body.



## VALUE

Value refers to relative lightness and darkness and is perceived in terms of varying levels of contrast.



## BALANCE

Balance is the impression of equilibrium in a pictorial or sculptural composition. Balance is often referred to as symmetrical, asymmetrical, or radial.



## TEXTURE

Texture refers to the tactile qualities of a surface (actual) or to the visual representation of such surface qualities (implied).



## UNITY

Unity is achieved when the components of a work of art are perceived as harmonious, giving the work a sense of completion.



## SPACE / PERSPECTIVE

Space refers to the area in which art is organized. Perspective is representing a volume of space or a 3-dimensional object on a flat surface.



## EMPHASIS

Emphasis refers to the created center of interest, the place in an artwork where your eye first lands.



HOW TO SHOW US  
YOUR  
CREATIONS...

We'd love to see your  
work!!!

Email your art teacher and  
be sure to tag your  
principal as well.

abigail\_gordon  
@idschools.org

(You may send examples to your own art teacher!)